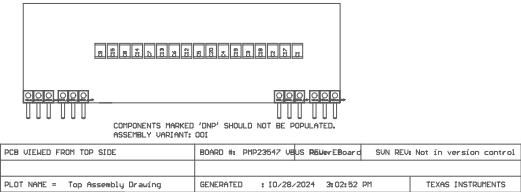


225 #Install label in unexposed box after final wash. Text shall be 8 pt font. Text shall be per the Label Table in the PDF schematic.
226 #These assemblies are ESD sensitive. ESD precautions shall be observed.
227 #These assemblies must be clean and free from flux and all contaminants. Use of no clean flux is not acceptable.
228 #These assemblies must comply with workmanship standards IPC-A-610 Class 2, unless otherwise specified.





COMPONENTS MARKED 'DNP' SHOULD NOT BE POPULATED. ASSEMBLY VARIANT CODE			
PCB VIEWED FROM BOTTOM SIDE	BOARD #:	PHP23547 ULS RBLwrEBoard	SUN REV: Not in version control
PLOT NAME = Bottom Assembly Drawing	GENERATED	: 10/28/2024 3:02:52 PM	TEXAS INSTRUMENTS